

NX25-DDC SERIES HI-FLOW PUMP SERVICE INSTRUCTIONS

Rotor / Vane / Shaft Seal Group Service Procedure



WARNING Disconnect electrical power and relieve any pressure in the lines prior to servicing this pump! Failure to do so can result in damage to the equipment and personal injury or death!

Rotor / Vane Replacement Procedure

The rotor, vane, and shaft seals are all located in the pump housing, and are accessed by removing the rotor cover (Figure 1).

1. Remove the rotor cover (A) by removing the 3 attaching screws (B).
2. Remove the O-ring gasket (C).
3. Using a pair of needle nose pliers, remove the rotor key from the motor shaft (D).
4. Remove rotor and vanes from motor shaft (E & F).
5. Inspect shaft and shaft seals for wear or damage, or signs of leakage.
6. Re-assemble in reverse order of disassembly. Note orientation of of vanes when inserting them into rotor (Figure 2).

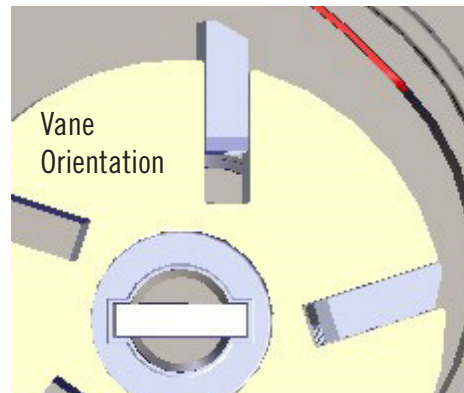


Figure 2

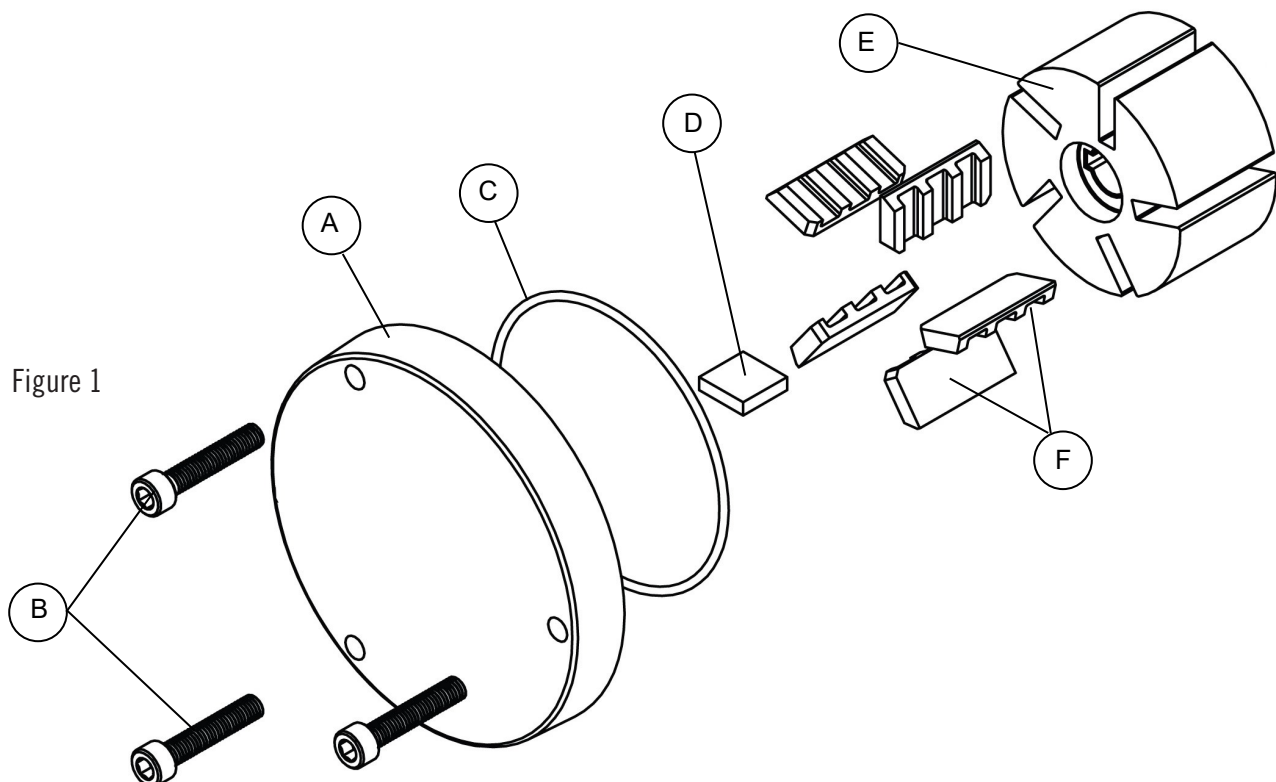


Figure 1

Rotor / Vane / Shaft Seal Group Service Procedure

NOTICE

The order and orientation of the seals, spring, washer, and retainer is critical to proper sealing and performance of the NX25-DDC series pump. It is imperative that they be re-assembled as shown to assure proper seal is maintained.

WARNING

Use extreme caution when removing the shaft seals, spring, washer, and retainer to prevent damage to the motor shaft and pump body. Damage to the shaft or pump body can cause leaks and / or premature motor or pump failure.

The shaft seals, spring, washers, and retainer are located inside the pump body on the motor shaft, behind the rotor. To access them, perform the removal procedure on page one of this document. Once the rotor and vanes have been removed, service the seals as described below.

1. Remove the retaining ring (8) from the motor shaft.
2. Using needle nosed pliers and a plastic O-ring pick, remove each seal, retainer, washer, and spring individually.
3. Using extreme caution, remove the final O-ring seal (3) using a plastic O-ring pick.
4. Inspect the shaft and pump body for damage or excessive wear prior to re-assembly.
5. Reverse order for re-assembly. Note seal orientation during reassembly.

Item No.	Description	QTY.
1	O-Ring, BUNA-N, 2-036	1
2	O-Ring, Fluorocarbon, -012	1
3	O-Ring, Fluorocarbon	1
4	Ring, Sealing	1
5	Ring, Mating	1
6	Washer	2
7	Spring, .390 X .41	1
8	Ring, Retaining	1

