

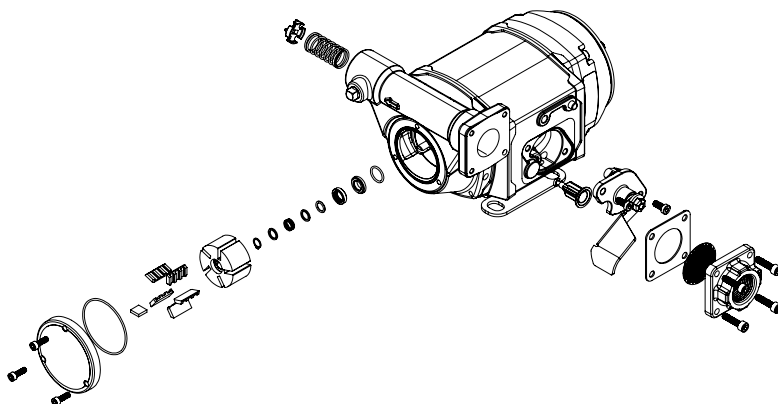
FILL-RITE®

A GORMAN-RUPP COMPANY



NX25-120 SERIES FOOT MOUNT TECHNICAL SPECIFICATIONS

Motor	NX25-120
Power	115V AC 50/60 Hz
HP (Horsepower) Rating	1/3 HP
Amps (FLA)	3.5
RPM	Variable 400 - 3500
Duty Cycle	Continuous for fuel transfer
Thermal Protection	Electronically protected
Certifications	UL/cUL motor



Pump	
Type / Design	Rotary vane
GPM in Supplied Configuration	25 GPM / 95 LPM*
Bypass Pressure Rating (PSI) - Max	25 PSI
Dry Vac (in Hg)	11
Head - Max	48.5'
Inlet - Size / Thread	1" NPT
Outlet - Size / Thread	1" NPT
Inlet - Material	Cast iron
Material - Pump Housing	Cast iron
Material - Wetted Material	Phenolic, stainless steel, steel, acetal, thermoset, Buna-N, fluorocarbon
Rotor Material	Powdered iron
Rotor Vane Material	Acetal
Compatible Fluids	Diesel, gasoline, biodiesel up to B20, E15, kerosene, mineral spirits, methanol (up to 15%)
Strainer Mesh Size	20 x 20
Warranty	Limited lifetime warranty†

SERVICE KIT INFORMATION

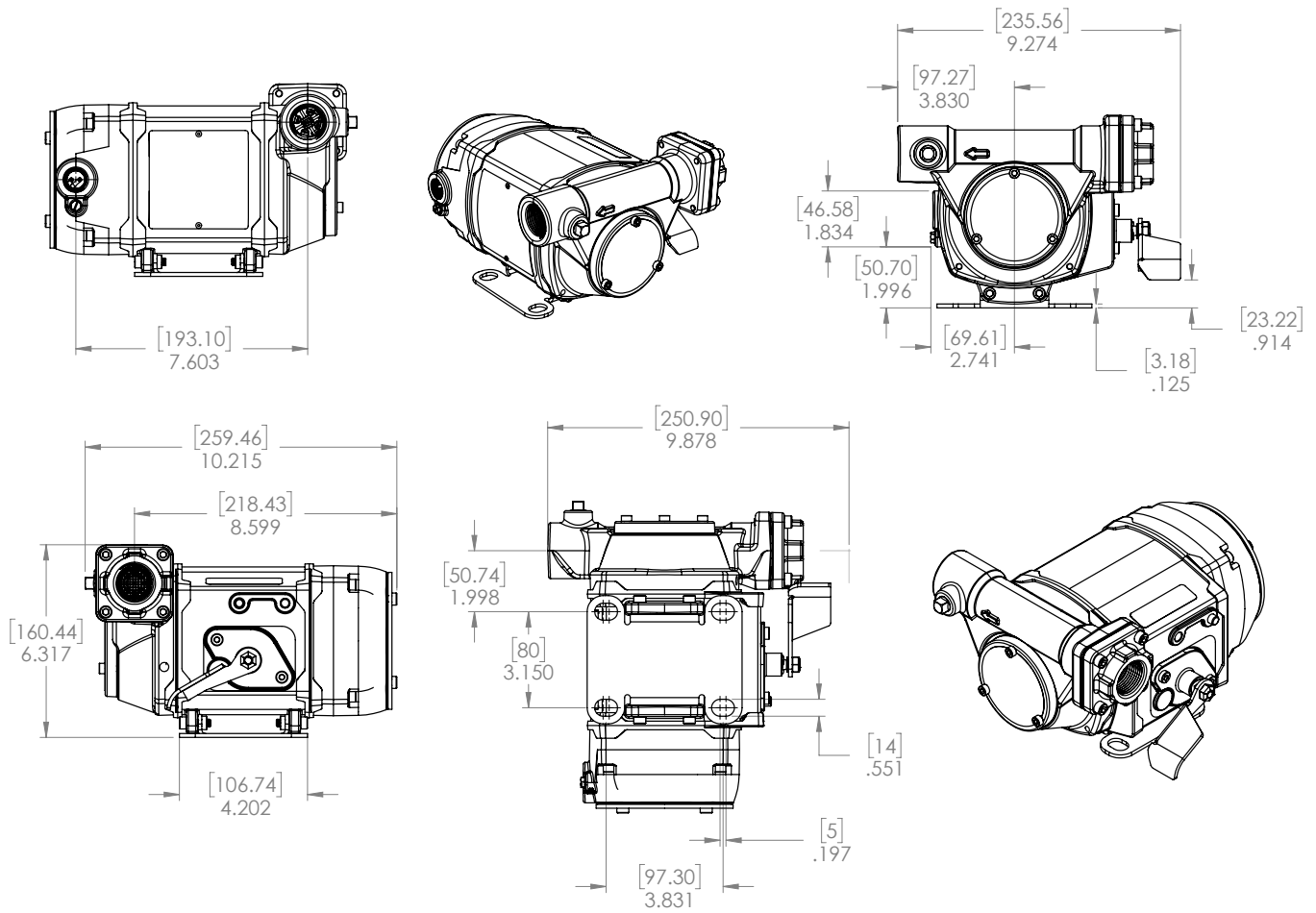
Kit	Description	Parts
KIT321RK	Overhaul Kit	Rotor, rotor cover, vanes, O-ring seal, shaft seal kit, bypass valve, inlet seal & screen, rotor key, attaching hardware
KIT321RG	Rotary Group	Rotor, vanes, rotor key, gasket, rotor cover, screws
KIT320SL	Shaft Seal	8-piece assembly
KIT321BV	Bypass Kit	Poppet, spring, O-ring, cap
KIT321SK	External Seal Kit	Rotor cover, O-ring seal, inlet gasket, screen
KIT321FS	Switch	Switch assembly
KIT321ASN	Anti-Siphon Kit	Anti-siphon, fasteners
KIT321FLG	Meter Flange Kit	Meter flange, O-ring, screws
KIT321JC	Junction Box Kit	Junction box cove, O-ring, screws

*Adding accessories will affect flow rate

†Warranty details can be found at fillrite.com

DIMENSIONAL INFORMATION

FILL-RITE®



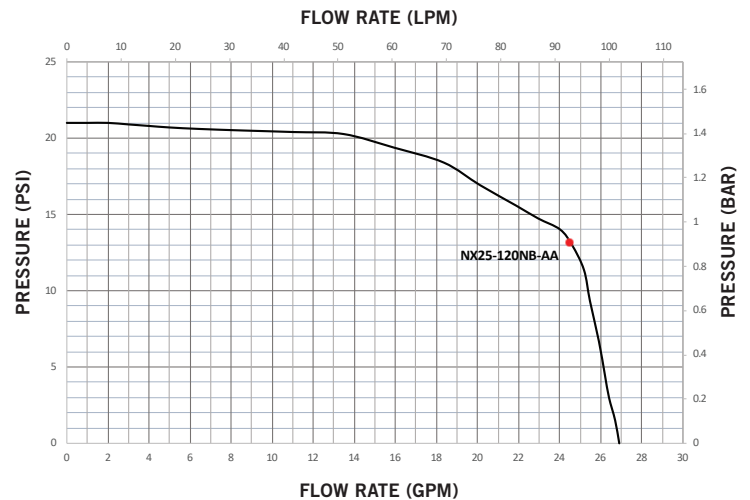
Measurements

Overall Height	6.317"
Overall Width	9.274"
Overall Depth	10.215"
Intake Center Line to Back of Motor Housing	8.599"
Product Weight	21.6 lbs / 9.8 kg
Qty per Pallet	16
Box Dimensions (LxWxH) - Pump Only	18" x 15-1/8" x 10"
Box Dimensions (LxWxH) - Full Kit	21-1/2" x 19-1/2" x 9-3/8"

Optional Accessories

Nozzle - Size	1" NPT-F inlet, 1-1/8" OD spout
Nozzle	Ultra high-flow automatic
Hose Diameter	1"
Hose Length	18'
Hose Material of Construction	Neoprene exterior
Hose Static Wire (Yes/No)	Yes
Certifications	UL/cUL listed

PERFORMANCE CURVE: NX25-120* SERIES



NX25-120 Pump Models

FIL-DS-565 Rev.2

MADE IN USA
WITH GLOBAL MATERIALS

CUSTOMER SUPPORT: (800) 634-2695
TECHNICAL SUPPORT: (260) 747-7524

FILLRITE.COM

GR
GORMAN-RUPP
COMPANY
The Pump People